



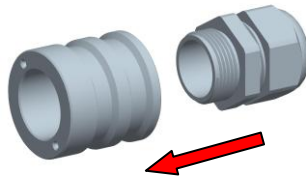
Handling Instruction

opticalCON | NAOBO



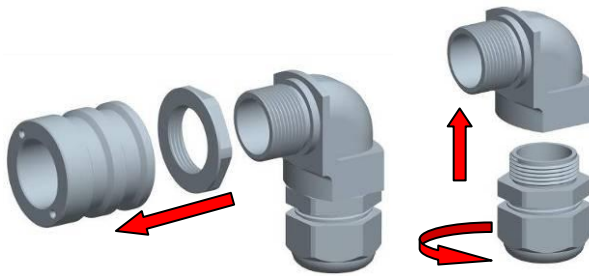
- (A) NAOBO components**
- ① cable tie
 - ② 2 screws
 - ③ opticalCON chassis connector (not included)
 - ④ NAOBO housing
 - ⑤ counter nut
 - ⑥ 90° rear-shell (use for 90° mount)
 - ⑦ PG-gland

STRAIGHT mount

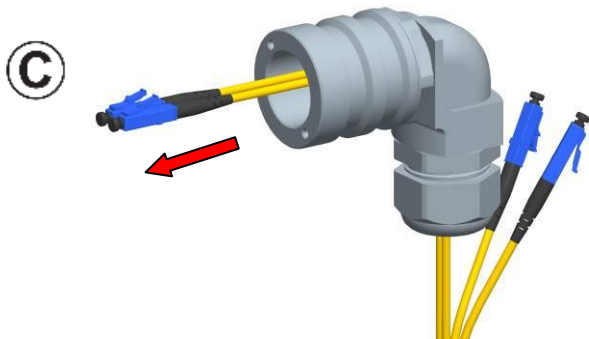


- (B) Screw NAOBO housing ④ and the PG-gland ⑦ together.**

(B) 90° mount

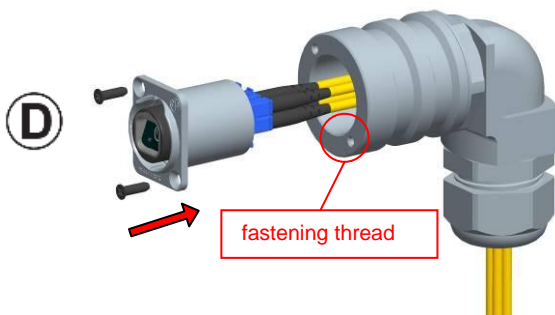


- 90° mount**
Don't forget the 90° degree rear-shell ⑥.

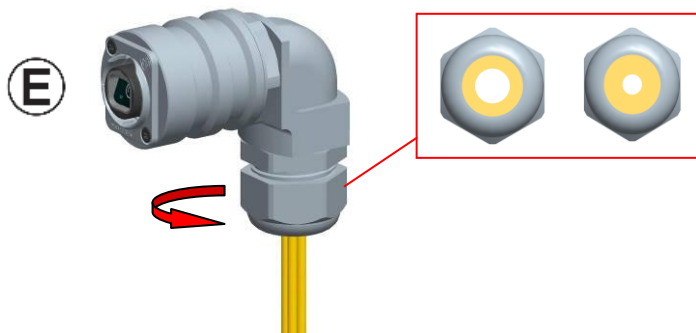


- Ⓒ Guide all LC cables carefully through the NAOBO housing ④.

ATTENTION: Make sure that the dust caps cover the LC-ferrules.



- Ⓓ Remove dust caps and connect the LC cables to the rear side of the opticalCON chassis connector ② and mount chassis With help of the screws ②.



- Ⓔ Tighten PG-gland ⑦ to reduce inner diameter of the insert and achieve a correct cable retention.



- Ⓕ Use cable tie ① to attach NAOBO to equipment (e.g. rack), rigs, etc.